



# **Village of Peninsula**

## **AGENDA SPECIAL COUNCIL MEETING Tuesday June 10, 2025 6:30 p.m.**

1582 Main Street  
Peninsula, Ohio 44264

### **PURPOSE:**

To Receive Presentation from the Conservancy for the CVNP and CVNP  
Regarding their Working Conceptual Plan for Old Golf Course Property

### **CALL TO ORDER**

### **ROLL CALL**

### **PRESENTATION**

### **ADJOURNMENT**



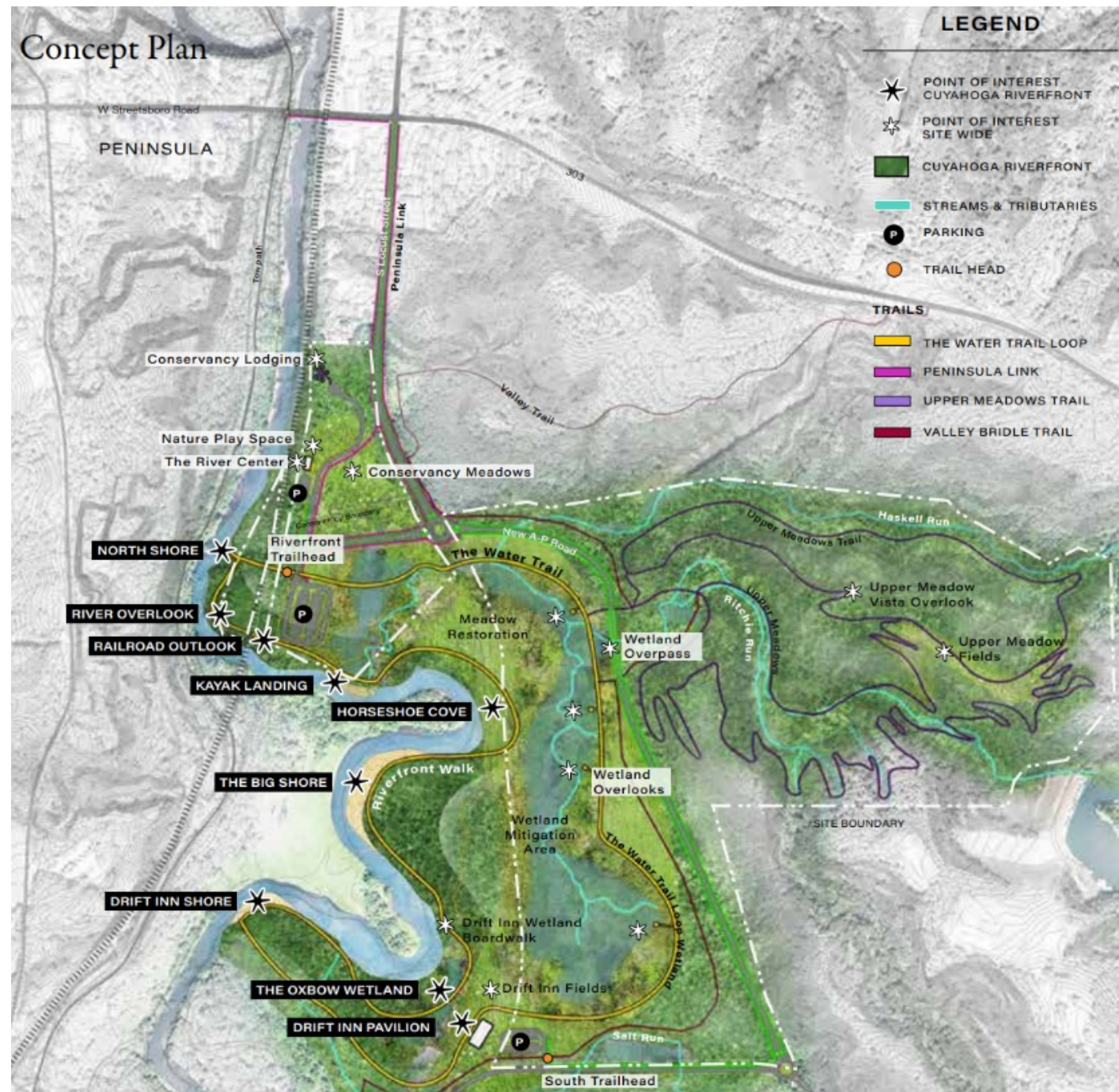
# **The Oxbow Meadows Project Concept Plan**

**Cuyahoga Valley National Park  
And  
The Conservancy for CVNP**



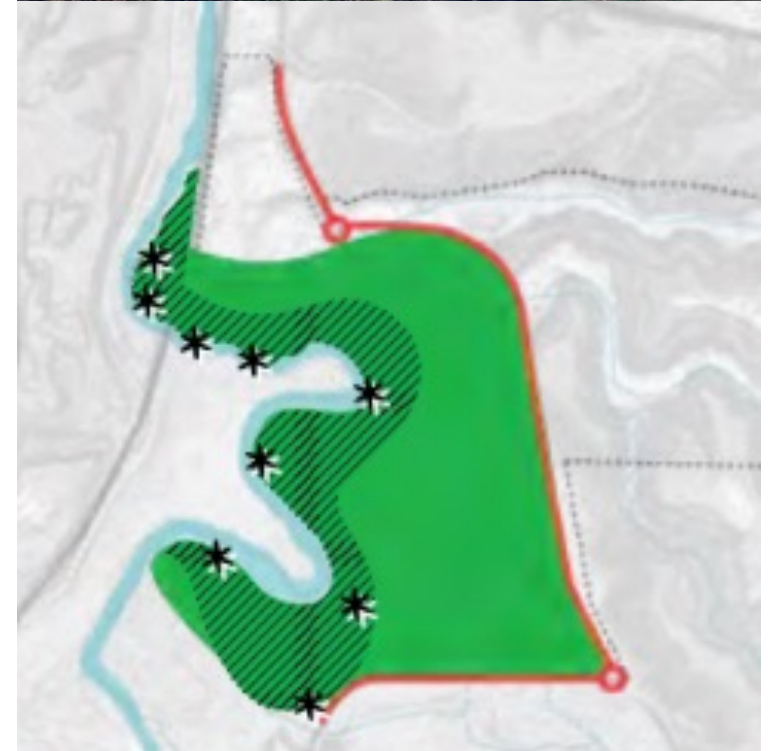
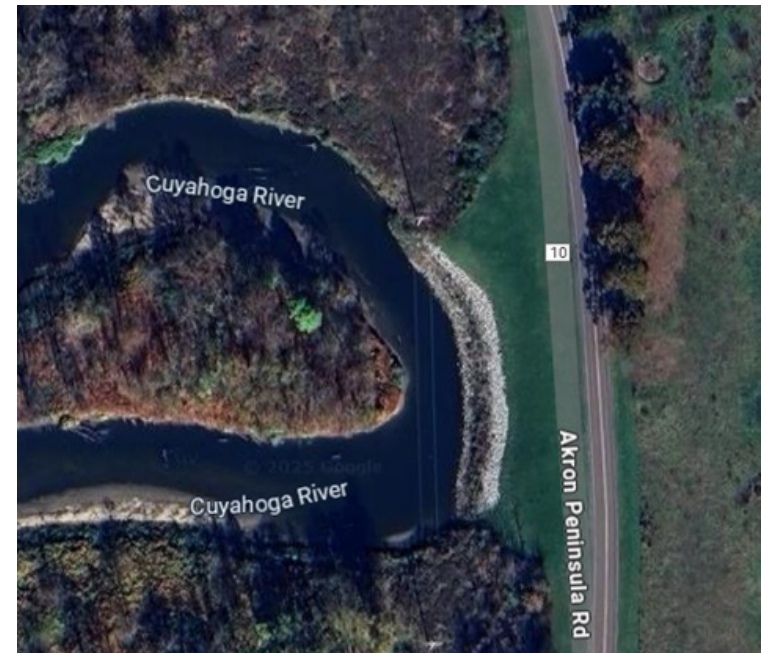
# Vision

- ‘A Park within a Park’
- Meaningful and Accessible River-centered Experience
- Community Amenities incorporate vision of residents
  - (public waterfront, open park space, nature play space, parking, etc.)



# Realign AP Road

- Unite the two pieces of the property
- Reduce vulnerability of AP road to river and reduce need for bank stabilization
- Opens riverfront to the public, allows for waterfront trail
- Connect the river with its floodplain and adjacent wetlands- improve ecological health
- Considering one or more roundabouts at reroute nodes to streamline traffic





# The North Anchor

- Former 'Par 3' course, west of AP road
- Unaffected by AP road movement
- ¼ to ½ mile from Downtown Peninsula
- Contains many priority elements from Concept Plan (River Center, Lodging, Kayak Landing, Parking, etc.)
- Requires close coordination between NPS, Conservancy and Peninsula
- Aligns with recent Peninsula Master Plan via multi-use trail connection



# Peninsula Link Trail

- Along AP Road Right of Way from 303 to North End of Property
- Connects Oxbow Meadows to the Towpath through Downtown Peninsula
- Weaves through the North Anchor, linking major elements

## RESIDENT & VISITOR BASED QUESTIONS

HOW WOULD YOU PRIORITIZE THE FOLLOWING IMPROVEMENTS ALONG SOUTH LOCUST (AKRON/PENINSULA ROAD)?

61%

Adding a multi-use path

Resident: 48% Visitor: 60%

49%

Maintaining on-street parking

Resident: 32% Visitor: 49%

39%

Maintaining a landscape buffer

Resident: 36% Visitor: 38%

39%

On-street bike facility

Resident: 31% Visitor: 38%

10%

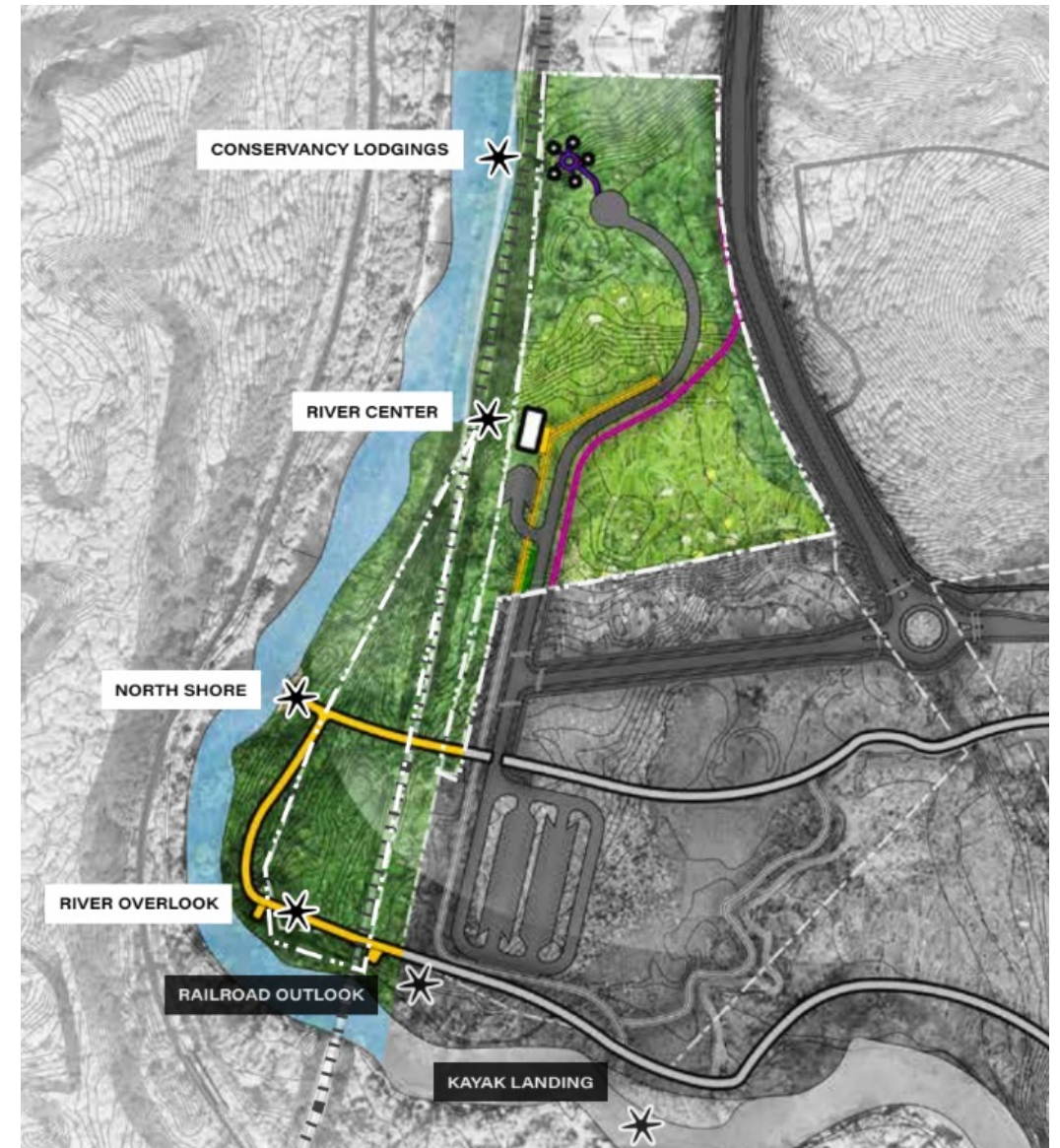
No improvements

4%

Other

# Conservancy Elements

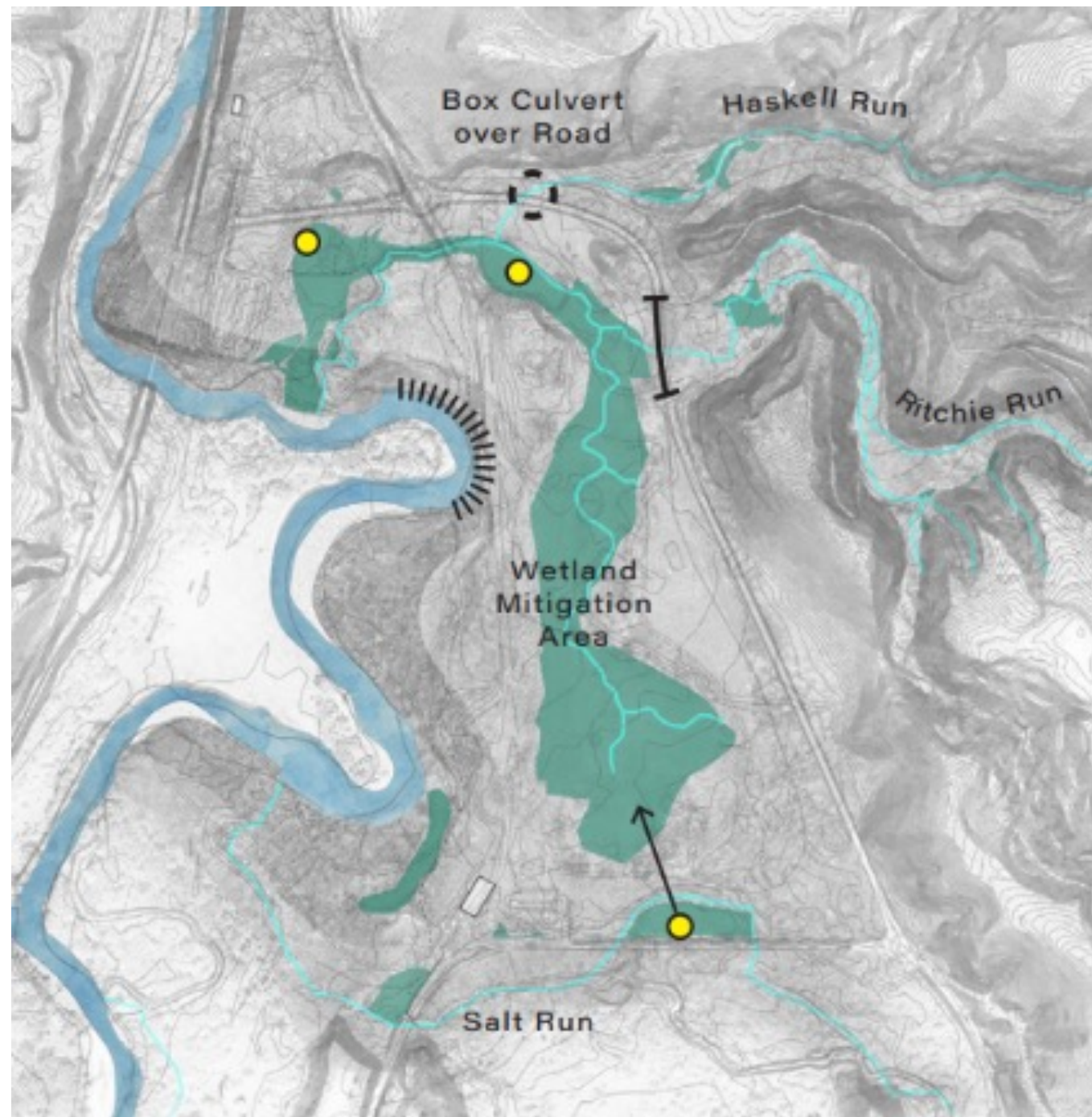
- River Center
  - Nature Play Space
- Lodging
- Festival/Event Space
- 'Teardrop' (west of CVSR tracks)





# NPS Elements

- River Access
- Waterfront Loop Trail
- Remediation and Restoration
- CVSR Connection?
- River Operations and Restoration Facility?





# Next Steps

- Temporary Activation of North Anchor (Conservancy)
- Move from Concept Plan into next phases (Conservancy)
- AP Road Alignment

A scenic landscape featuring a calm pond in the foreground, reflecting the sky and surrounding greenery. The pond is bordered by lush grass and various trees, including a prominent evergreen on the right. The background shows a dense forest under a bright blue sky with scattered white clouds. The text "Questions and Discussion" is overlaid in the center in a large, white, sans-serif font.

# Questions and Discussion



# Contacts

- Pat McMahon

Park Planner, CVNP

[patrick\\_mcmahon@nps.gov](mailto:patrick_mcmahon@nps.gov)

- Stacey Rusher

Director of Park Projects, Conservancy for CVNP

[srusher@forcvnp.org](mailto:srusher@forcvnp.org),

M: 440-242-1516